

TELESIS mL series Hybrid IP-PBX

TELESIS - Leading-Edge IP Telephony System, is a Hybrid IP PBX Business Phone Systems that are capable of interworking between all its IP and TDM users . It has a new approach to telephony technology that is CAU – Cluster of Autonomous Units, providing a Fully Features IP-PBX with built-in LAN Port and 112 SIP Licenses (Common for SIP Trunk and SIP Extensions)



Hybrid IP PBX Business Phone Systems

- 1 • Hardware Platform
 - 1 Cabinet having 4 slots for 64 TDM Ports
 - 2 Cabinets combo having 8 slots for 128 TDM Ports
 - External 48 V DC Power Adaptor

- 2 • Interface
 - SIP Trunk Lines
 - ISDN PRI Line
 - Analog CO Lines with CLI
 - SIP Extensions
 - Analog Extensions
 - Digital extensions

- 3 • Software
 - Built-in 112 SIP Port Licenses (common to SIP Trunk and SIP Extensions)



TELESIS Hardware Configuration

- Each Cabinet has 4 Slots (64 TDM Ports)
- 2 Cabinet Stacking with Flat Cable ,provides 128 TDM Ports
- Built-in 112 SIP Port Licenses (Common for SIP Trunk & SIP Extensions)
- **Analog extension Cards** – 8 Port and 16 Ports
- **Analog Trunk Cards** – 4 Port and 8 Ports
- **Hybrid Cards** – 4 CO x 8 Analog Extensions / 4 CO x 2 Digital x 6 Analog
- **Digital Cards** – 8 Port and 15 Port Digital Cards
- **ISDN PRI Card** – Mounted on CPU , No slot Required, Max 1 ISDN PRI Card
- **Max Capacity** : 1 PRI / 4 CO / 120 Analog / 112 SIP Licenses / 16 xSIP
- (Connect Upto 127 Systems in clusters on IP network and get upto 30,000 ports)



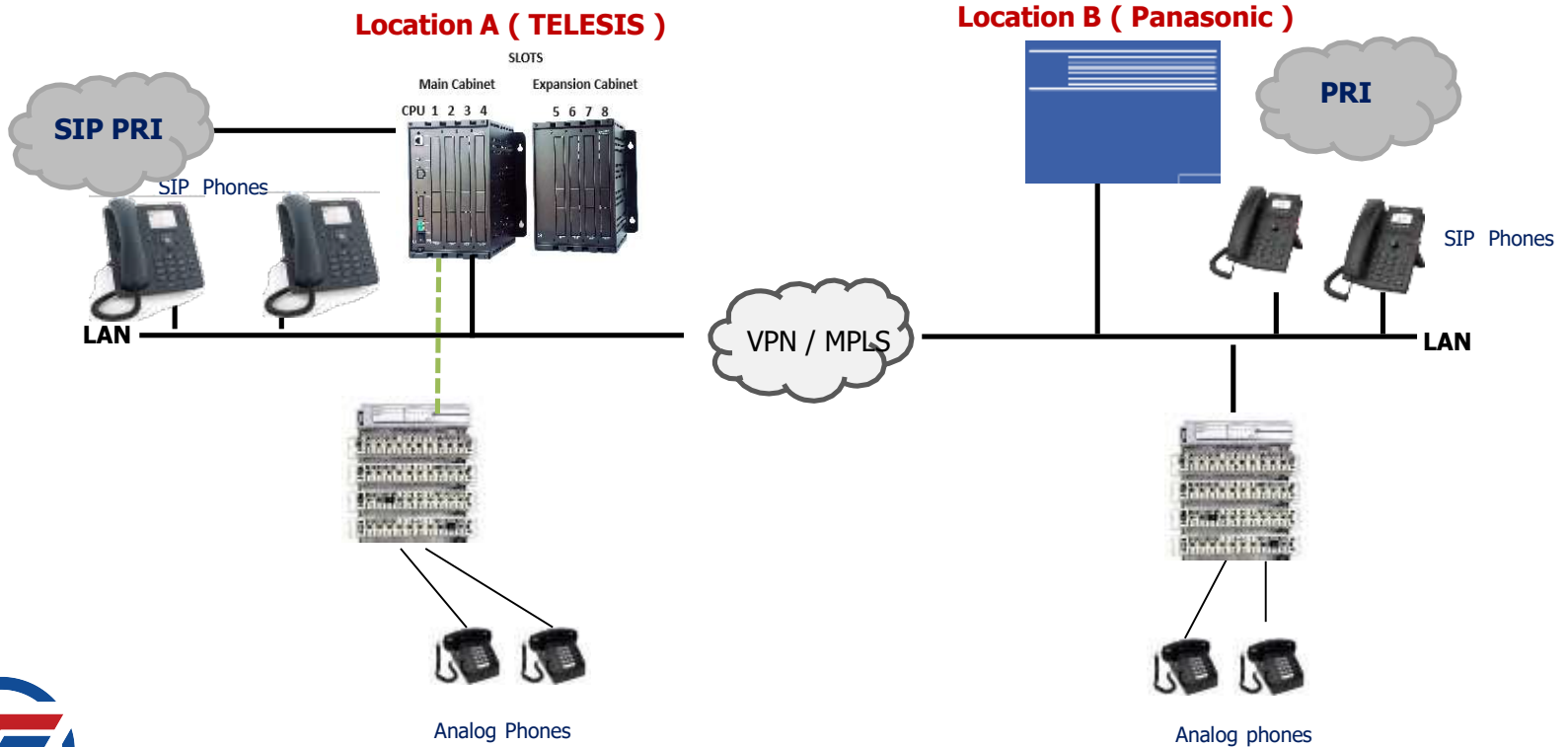
A **And many other built-in features...**

- **Voicemail & Voice to email**
 - Unlimited number of mailboxes with 100 Hours of Voice Mail
- **Hotel Features & Flexible Numbering**
 - including direct PMS Interface
- **100 Hours Call Recording**
- **Hunt Groups**
- **Multiple Level IVR / Auto Attendant**
- **Multiple SIP Trunk Interface**
 - Use Dual WAN Router and connect Airtel & TATA on same PBX
- **Multi-Party Conference**
- **CDR**
 - use TELESIS Tool to search and download Call Details
- **BLF (Busy Lamp Field) on SIP Phones , like SNOM, intele T 790, etc**



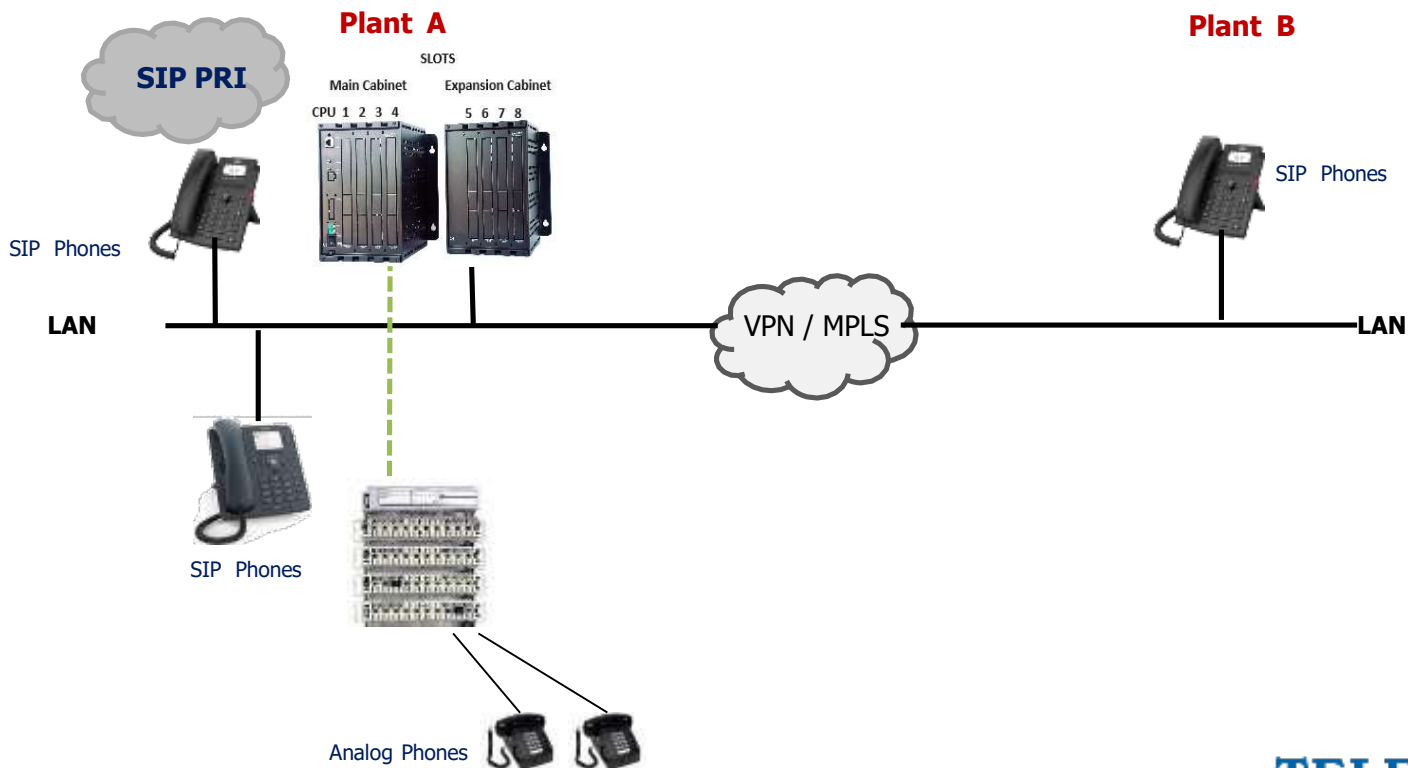
B

Connect 2 PBX system on Intra Branch Network

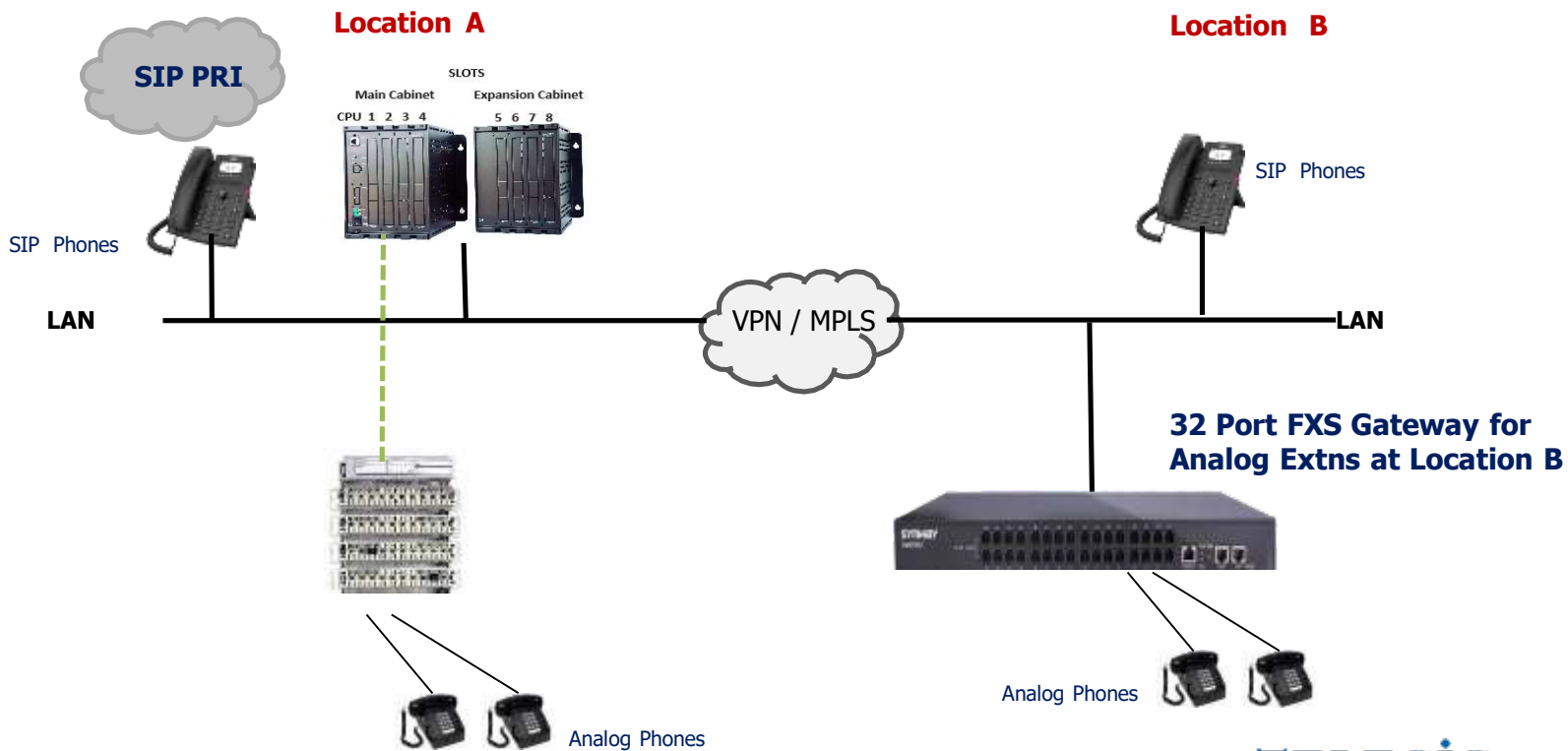




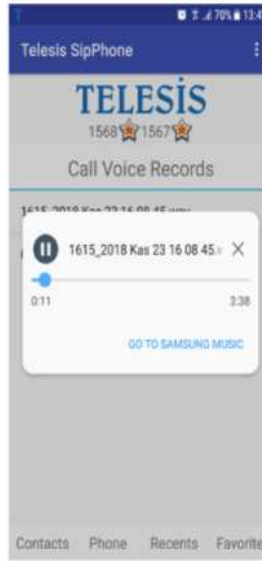
Connect IP Phone at Remote Location over Intra-office Network



D Connect FXS Gateway at Remote Location over Intra-office Network



MOBILE SIP CLIENT



Hallmarks

- Supported by Android 6.1 or newer version
- High voice quality
- Dual SIP accounts
- Intelligent LAN and WAN ip address selection for data usage
- Operation in both mobile and WiFi network
- Manual mobile network selection even WiFi is available and connected
- Bluetooth voice support and call control from BT device
- Call waiting
- Call transfer
- New call through the first account when there is a waiting call
- New call through the second account when there is a waiting call
- Call voice recording
- Access to recorded calls within the application
- Manual sharing and mailing recorded call
- Call deflection
- Address book integration
- Call detail records (CDR)
- Prefix definition for PBX trunk calls
- Trace of incoming, outgoing, missed and lost calls
- List of favourite contacts



TELESIS is brand neutral and supports all end Point phones and extensions

- Analog Extensions
- IP Phones
- Soft phones – Mobile App
- Desktop – App
- Video Phones
- Portable Wi-Fi Phones.

Our Solution supports all Analog and generic SIP Phones of any make or Model , including Wired, Wireless and Portable Wi-Fi Handsets



All Entry Level SIP Phones support Display , Caller ID,
Transfer , Conference...

Sp-Phone , Call



Fanvil 301PV2,
10/100 switch



Fanvil 303G GIGA Bit
switch Phone



SNOM D120
10/100 switch



SNOM D150 , GIGA Bit
switch Phone



Executive Level SIP Phones , incorporate Large Display, HD Quality Sp-phone and Memory Keys



SNOM D717



SNOM D735



SNOM D785



FANVIL W611W
(Portable Wi-Fi Phone)



Operator Console Phone provides quick access to Memory keys and extension status

Highlights:

- Local phonebook, caller ID, call hold, call transfer
- HD audio on speakerphone and handset
- Can handle a variety of audio applications, including IP voice, Multiparty conference, etc.
- Fast Ethernet - 10/100 Mbps Ethernet with PoE enabled.
- Stand with 2 adjustable angles.
- BLF with Light indicator
- Navigation Keys
- Soft Function Keys

